



Achrafieh 2378

where dreams & reality meet.

Achrafieh 2378



Charming Design in a Premium Location

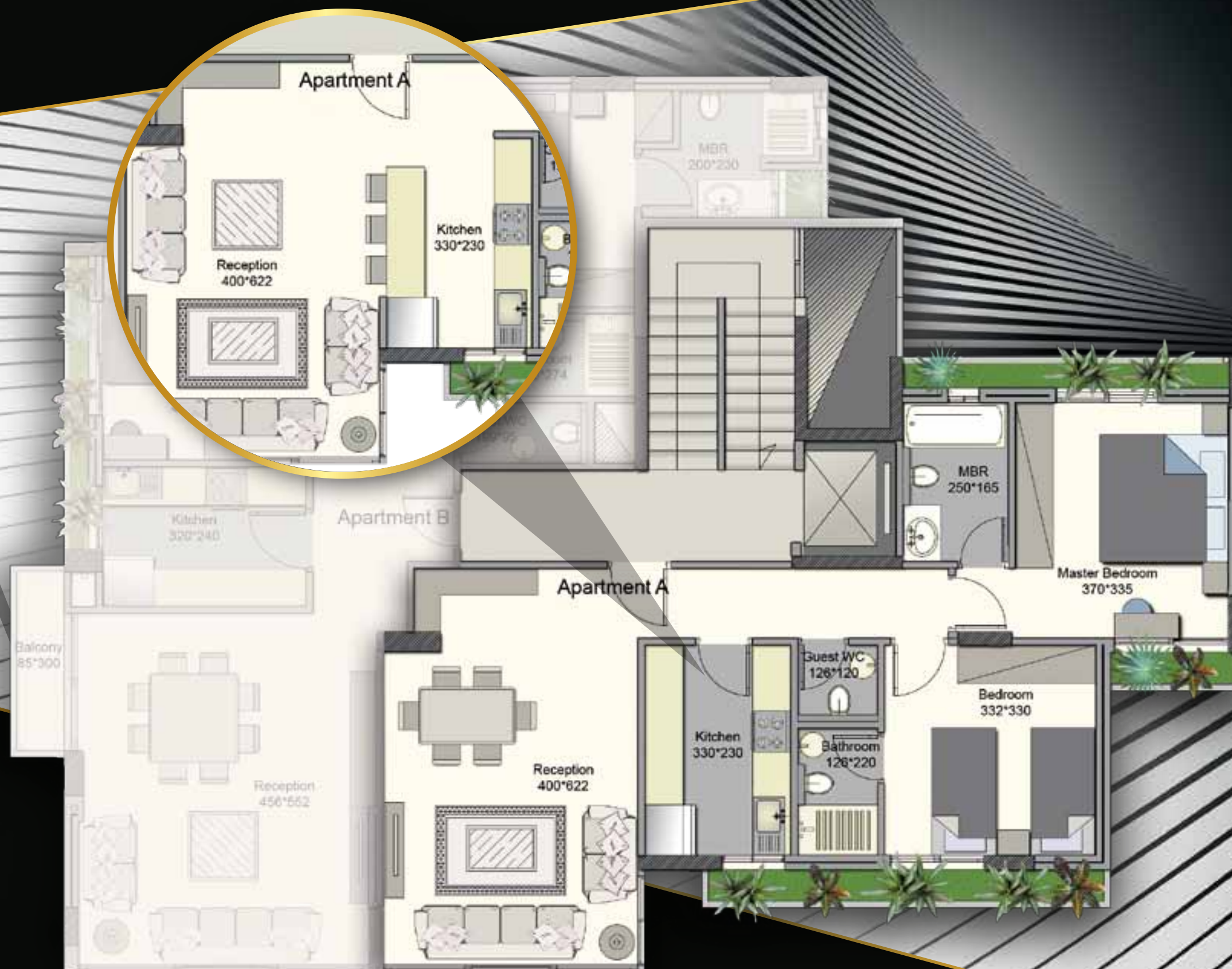
Achrafieh 2378 delivers a sleek contemporary architecture to meet with your modern design expectations. Now, after a long day at the office, you are able to enjoy your exclusive flat which is located away from Sassine with a 5 minute walk, has an easy access to Hazmieh and Jounieh as well.

To match the diverse needs, Achrafieh 2378 provides different size options to suite your living area spaces.

Get Distinguished... Live the luxury city lifestyle.



100m²



Located on the first 4 floors and made up of 100 sqm that include 2 master bedrooms. Apartment A gives the choice to open your kitchen space becoming a joined area with the sitting room and provides one parking space for the apartment.

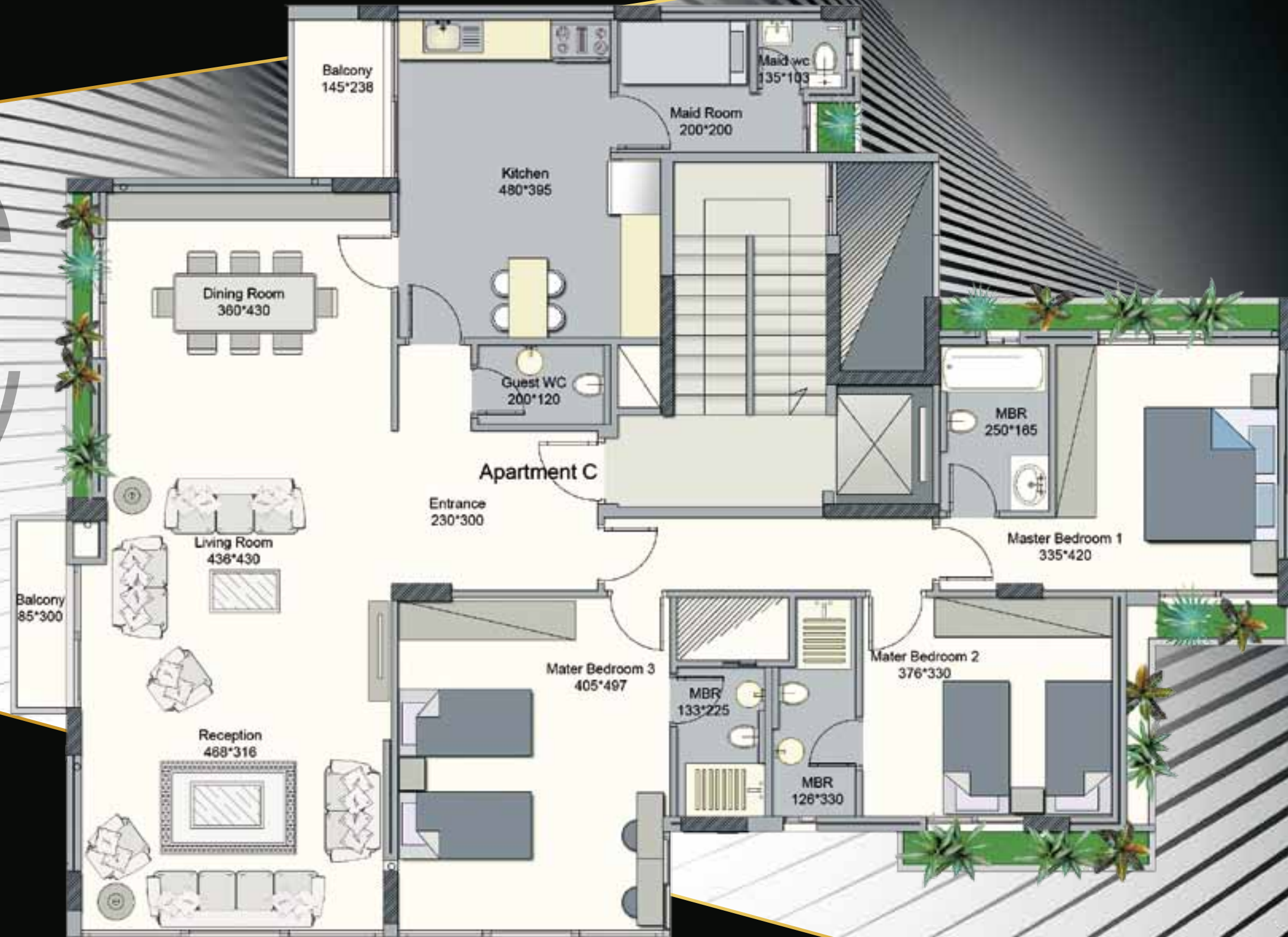


Apartment B is also located on the first 4 floors with apartment A facing it on the same level.

A 110 sqm apartment features 2 bedrooms, 3 toilets, and one exclusive parking space. Choose between an open or closed kitchen space suiting your needs.

110m²

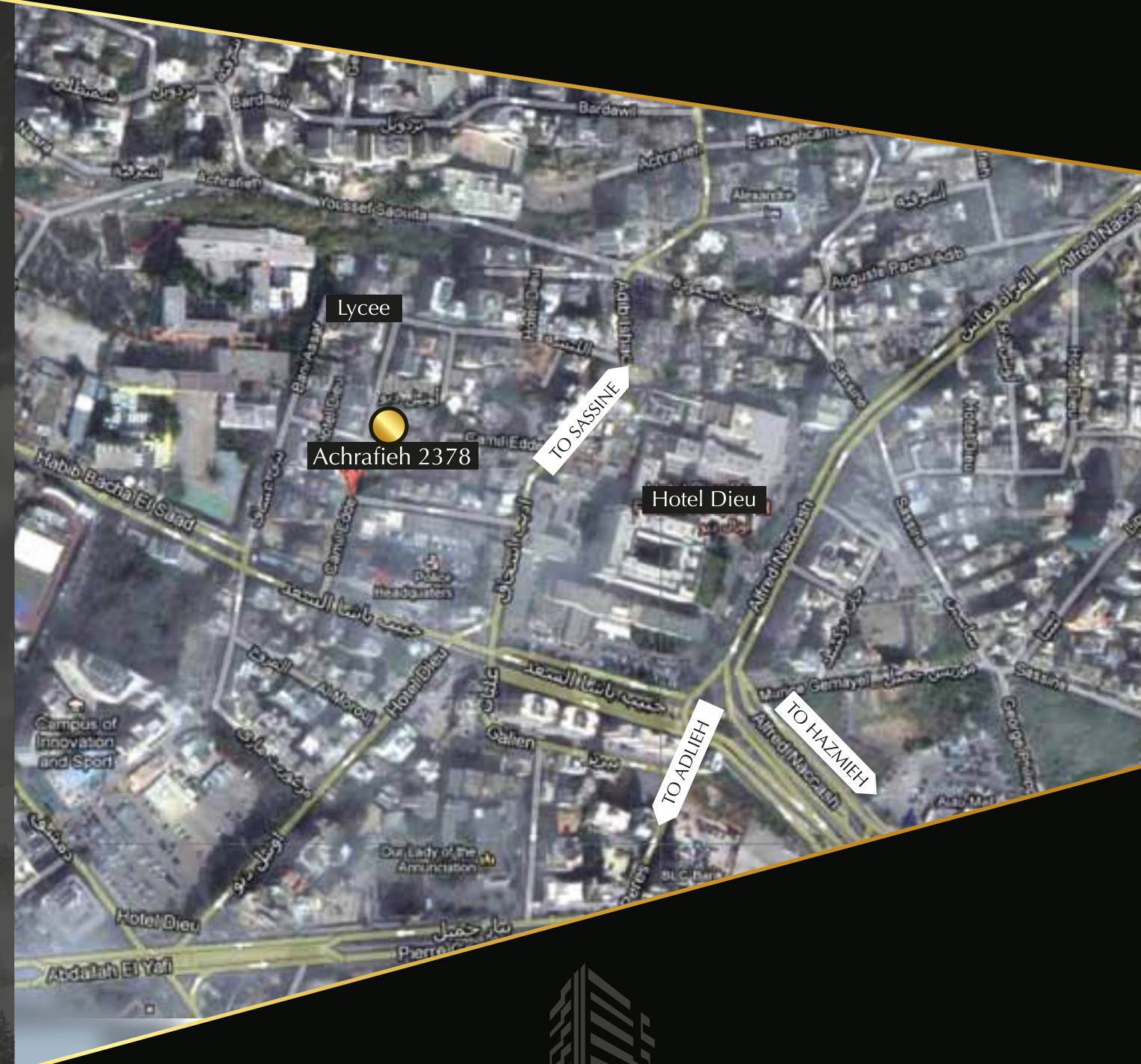
210m²



Apartment C is the spacious 210 sqm flat you have always dreamed of. Located on the floors 5 till 10th with an astonishing panoramic mountain view. Delivering 3 master bedrooms, a maid's room, 2 salon areas, a dining room, and 2 parking spaces.

SPECIFICATIONS

- ◆ Car park for each flat
- ◆ Electrical generator
- ◆ Security access doors and entrances
- ◆ Sensor activated lighting system for parking and stairs
- ◆ Video phone system connected to the access control
- ◆ Insulated double external walls
- ◆ Double glazed aluminium
- ◆ Individual electric system including TV / telephone and internet system
- ◆ High grade marble for living and dining room
- ◆ High grade ceramic for bedrooms
- ◆ High quality wood and granite kitchen
- ◆ Central boiler for heating by radiators for comfort and economical water heater
- ◆ Two hot-water tanks for each flat
- ◆ Individual air-conditioning units for each flat
- ◆ High standard white fixtures
- ◆ High standard modern mixers
- ◆ High standard sinks and mixers for kitchens
- ◆ Motorized aluminium shutters
- ◆ Ornamental plaster cornice



Achrafieh 2378

A few minutes away from the
Central District Beirut.

Developed & Managed by Cityscape
Mobile +961 3 370502 +961 3 733 364
Tel / Fax +961 1 565 460
Consultant & Architect Daoud Mansour
Interior Design & Architect Cynthia Saab
Civil Engineer Carl Mansour

Achrafieh 2378